

# Public Safety DAS

## Product Catalog



## TETRA Digital Active DAS (Direct Coupling)

Model: 04021D (P/N:04021D.38Z)

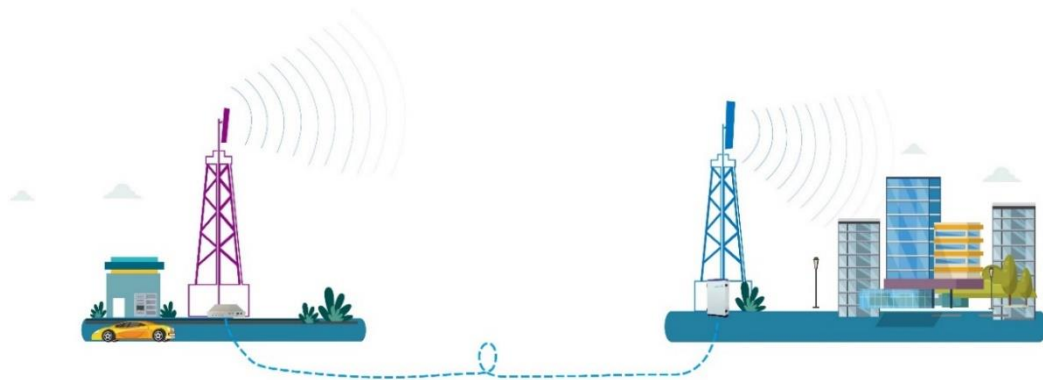
### Product Features

- Robust security, applied in critical communication coverage enhancement.
- Digital filtering, bandwidth adjustable.
- Direct coupling from base station with pure signal.
- Intelligent algorithms effectively mitigate uplink interference.
- Independent gain control further optimizes performance.
- Stable and improved signal transmission quality.
- 1 MU (Master Unit) can support up to 8 RU (Remote Unit) to maximize utilization of fiber optic cable.
- Cloud-based NMS facilitates remote control and monitoring.

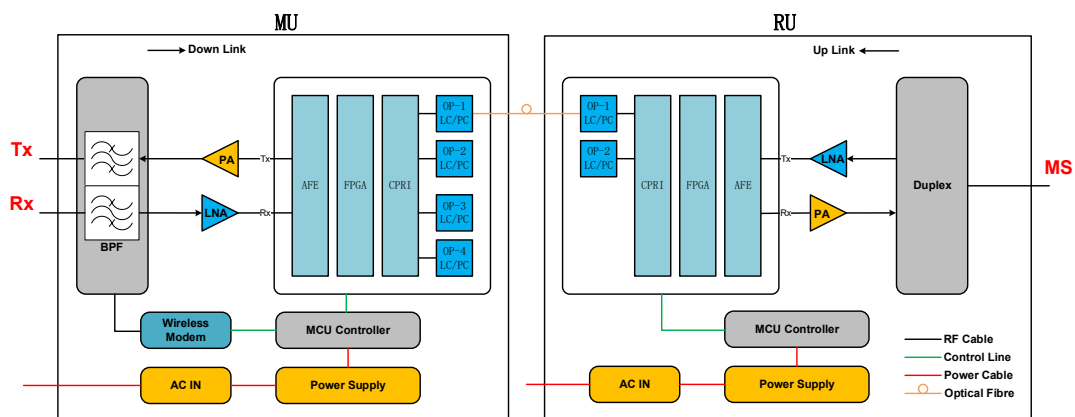


### Application Scenario

Typical sites: public safety, utility, police, firefighter, mining, airport, metro, oil&gas, and more.



### Block Diagram



Technical specifications are subject to change without prior notice.



## Technical Specifications

P/N: 04021D.38Z		MU	RU
Frequency Range	Uplink	380-385 MHz (adjustable)	
	Downlink	390-395 MHz (adjustable)	
Number of Sub-bands per band		1	
Bandwidth (per sub-band)		200kHz-5MHz/200kHz (adjustable)	
Number of Units		1	≤ 8
Max. Gain		50±3dB	
Manual Gain Control		31 dB in step of 1 dB	
Automatic Gain Control		≥ 20 dB	
Gain Flatness		≤ ±3 dB (peak-to-peak)	
Max. Input Power Without Damage	Uplink	-10 dBm	
	Downlink	10 dBm	
Output Power	Uplink	-10 ± 2dBm per band	
	Downlink	43 ± 2dBm per band	
Noise Figure		UL: ≤ 6 dB	
EVM		≤8%	≤8%
VSWR		≤ 1.5	
System Delay		≤ 15 μs	
RF Connector		N-Female	
Impedance		50Ω	
Optical Output Power		≥0 dBm	
Optical Wavelength		1310 nm/1550 nm (WDM)	
Fiber		Single Mode	
Fiber Connector		4*LC/PC	1*FC/PC
Power Supply		DC -48 V	AC110/220V
Power Consumption		≤65 W	≤ 385 W
Dimensions		422*352*44 mm	513*416*187 mm
Weight		≤10 kg	≤ 35 kg
IP Rating		IP40	IP65
Operating Temperature		-10~50 °C	-25~55 °C
NMS	Local	Via RJ45	
	Remote	Via Cloud-based NMS (optional)	

Technical specifications are subject to change without prior notice.



## DMR Digital Active DAS (Direct Coupling)

Model: 04021D (P/N:04021D.41Z)

### Product Features:

- Robust security, applied in critical communication coverage enhancement.
- Digital filtering, bandwidth adjustable.
- Direct coupling from base station with pure signal.
- Intelligent algorithms effectively mitigate uplink interference.
- Independent gain control further optimizes performance.
- Stable and improved signal transmission quality.
- 1 MU (Master Unit) can support up to 8 RU (Remote Unit) to maximize utilization of fiber optic cable.
- Cloud-based NMS facilitates remote control and monitoring.

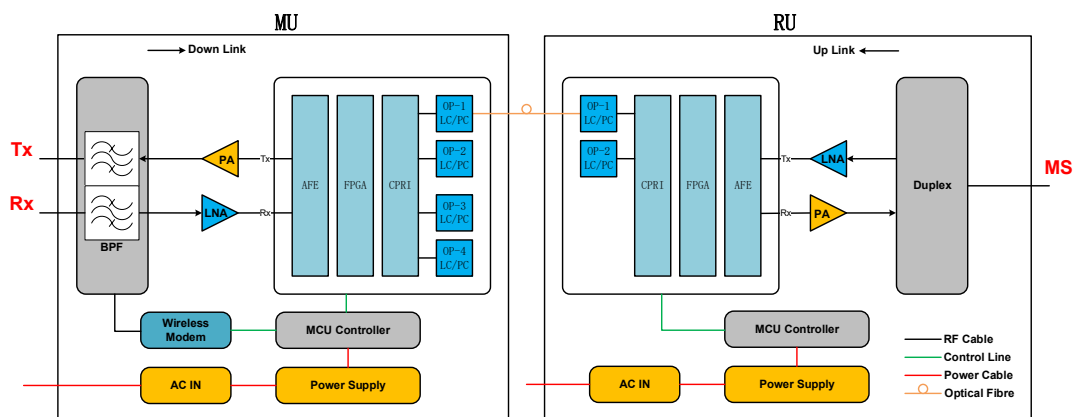


### Application Scenario:

Typical sites: public safety, utility, police, firefighter, mining, airport, metro, oil&gas, and more.



### Block Diagram



Technical specifications are subject to change without prior notice.



## Technical Specifications:

P/N: 04021D.41Z		MU	RU
Frequency Range	Uplink	415-420 MHz (adjustable)	
	Downlink	425-430 MHz (adjustable)	
Number of Sub-bands per band		1	
Bandwidth (per sub-band)		200kHz-5MHz/200kHz (adjustable)	
Number of Units		1	≤ 8
Max. Gain		50±3dB	
Manual Gain Control		31 dB in step of 1 dB	
Automatic Gain Control		≥20 dB	
Gain Flatness		≤ ±3 dB (peak-to-peak)	
Max. Input Power Without Damage	Uplink	-10 dBm	
	Downlink	10 dBm	
Output Power	Uplink	-10 ±2dBm per band	
	Downlink	43 ±2dBm per band	
Noise Figure		UL: ≤ 6 dB	
EVM		≤8%	≤8%
VSWR		≤ 1.5	
System Delay		≤ 15 μs	
RF Connector		N-Female	
Impedance		50Ω	
Optical Output Power		≥0 dBm	
Optical Wavelength		1310 nm/1550 nm (WDM)	
Fiber		Single Mode	
Fiber Connector		4*LC/PC	1*FC/PC
Power Supply		DC -48 V	AC110/220V
Power Consumption		≤65 W	≤ 385 W
Dimensions		422*352*44 mm	513*416*187 mm
Weight		≤10 kg	≤ 35 kg
IP Rating		IP40	IP65
Operating Temperature		-10~50 °C	-25~55 °C
NMS	Local	Via RJ45	
	Remote	Via Cloud-based NMS (optional)	

Technical specifications are subject to change without prior notice.



## VHF Digital Active DAS (Direct Coupling)

Model: 04021D (P/N:04021D.15Z)

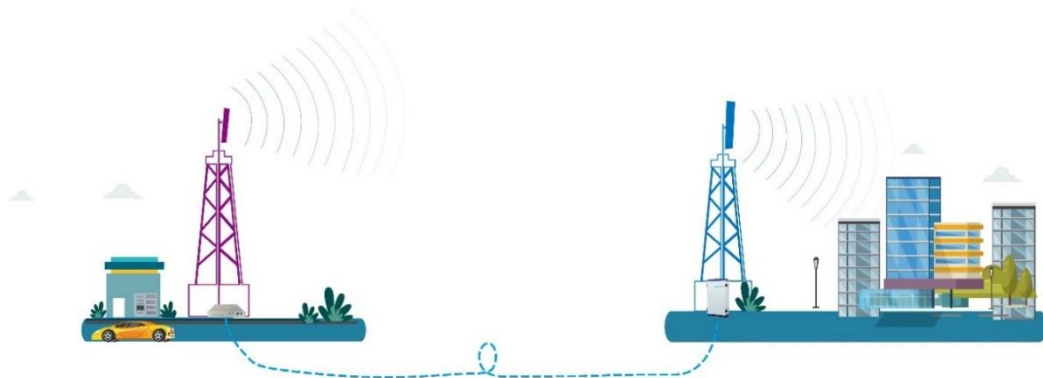
### Product Features

- Robust security, applied in critical communication coverage enhancement.
- Digital filtering, bandwidth adjustable.
- Direct coupling from base station with pure signal.
- Intelligent algorithms effectively mitigate uplink interference.
- Independent gain control further optimizes performance.
- Stable and improved signal transmission quality.
- 1 MU (Master Unit) can support up to 8 RU (Remote Unit) to maximize utilization of fiber optic cable.
- Cloud-based NMS facilitates remote control and monitoring.

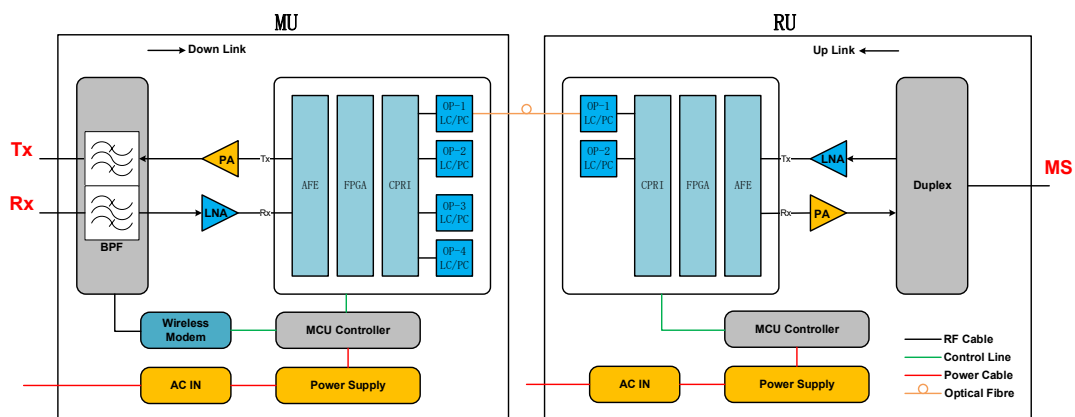


### Application Scenario

Typical sites: public safety, utility, police, firefighter, mining, airport, metro, oil&gas, and more.



### Block Diagram



Technical specifications are subject to change without prior notice.



## Technical Specifications

P/N: 04021D.15Z		MU	RU
Frequency Range	Uplink	150-152 MHz (adjustable)	
	Downlink	160-162 MHz (adjustable)	
Number of Sub-bands per band		1	
Bandwidth (per sub-band)		200kHz-5MHz/200kHz (adjustable)	
Number of Units		1	≤ 8
Max. Gain		50±3dB	
Manual Gain Control		31 dB in step of 1 dB	
Automatic Gain Control		≥20 dB	
Gain Flatness		≤ ±3 dB (peak-to-peak)	
Max. Input Power Without Damage	Uplink	-10 dBm	
	Downlink	10 dBm	
Output Power	Uplink	-10 ±2dBm per band	
	Downlink	43 ±2dBm per band	
Noise Figure		UL: ≤ 6 dB	
EVM		≤8%	≤8%
VSWR		≤ 1.5	
System Delay		≤ 15 μs	
RF Connector		N-Female	
Impedance		50Ω	
Optical Output Power		≥0 dBm	
Optical Wavelength		1310 nm/1550 nm (WDM)	
Fiber		Single Mode	
Fiber Connector		4*LC/PC	1*FC/PC
Power Supply		DC -48 V	AC110/220V
Power Consumption		≤65 W	≤ 385 W
Dimensions		422*352*44 mm	513*416*187 mm
Weight		≤10 kg	≤ 35 kg
IP Rating		IP40	IP65
Operating Temperature		-10~50 °C	-25~55 °C
NMS	Local	Via RJ45	
	Remote	Via Cloud-based NMS (optional)	

Technical specifications are subject to change without prior notice.



# LTE700 Public Safety Digital Active DAS (Air-coupling)

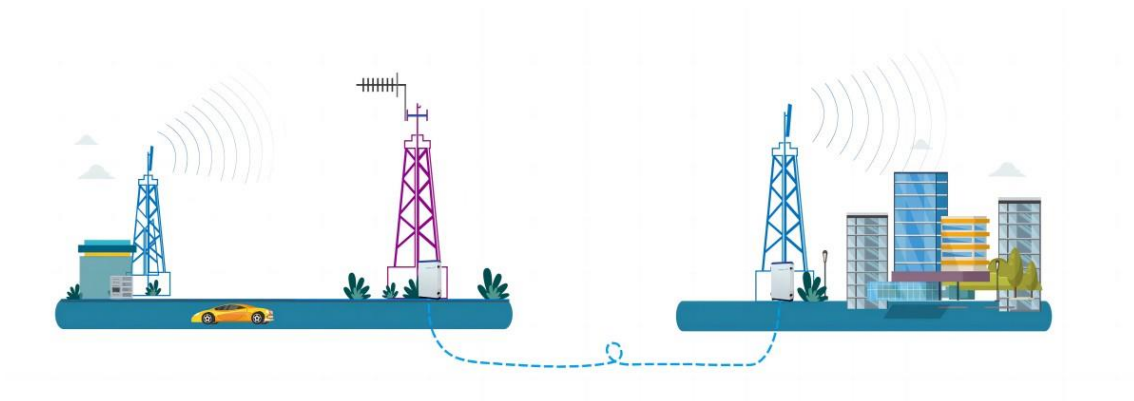
Model: 03721D (P/N: 03721D.69K)

## Product Features

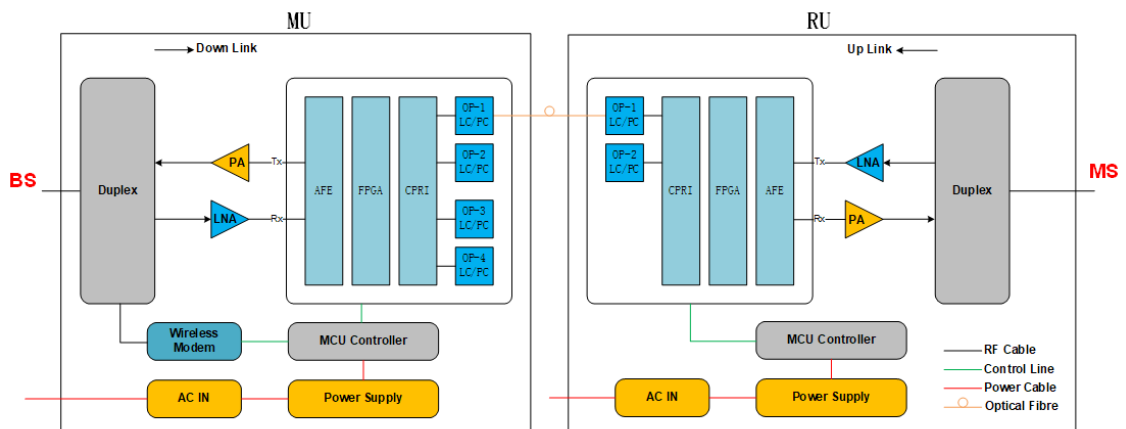
- Support multi-band system.
- Digital bandwidth-adjustable features allow for seamless adaptability to different frequency bands.
- Optical transmission up to 10km (max.).
- Support NMS local/remote control.
- Low noise and high reliability.
- Each master unit can support max.8 remote units.
- Support to monitor donor signal parameters for easy optimization and troubleshooting.



## Application Scenario



## Block Diagram



Technical specifications are subject to change without prior notice.



## Technical Specifications

P/N: 03721D.69K		MU	RU
Frequency Range	Uplink	698-708 MHz (adjustable)	
	Downlink	753-763 MHz (adjustable)	
Number of Sub-bands per band		1	
Bandwidth (per sub-band)		0.2 - 10 MHz (adjustable)	
Number of Units		1	≤ 8
Max Gain		90 ± 3 dB	
Manual Gain Control		31 dB in step of 1 dB	
Automatic Gain Control		≥ 20 dB	
Gain Flatness		≤ ± 3 dB (peak-to-peak)	
Max. Input Power without Damage	Uplink	-10 dBm	
	Downlink	10 dBm	
Output Power	Uplink	27 ± 2 dBm	
	Downlink	37 ± 2 dBm	
Out of Band Gain	2,0 ≤ f_offset_CW < 5,0 MHz	60 dB	
	5,0 ≤ f_offset_CW < 10,0 MHz	45 dB	
	10,0 MHz ≤ f_offset_CW	35 dB	
Spurious Emission	9KHz-1GHz	≤ -36 dBm	
	1GHz-12.75GHz	≤ -30 dBm	
ACRR	±10MHz	-36dBc	
	±20MHz	-40dBc	
Noise Figure		UL: ≤ 6 dB	
EVM		≤ 8%	≤ 8%
VSWR		≤ 1.8	
System Delay		≤ 15 μs	
RF Connector		Input: 2*N-Female/Output: 2*N-Female	
Impedance		50Ω	
Optical Output Power		≥ -9 dBm	
Optical Wavelength		1550 nm/1310 nm (WDM)	
Fiber		Single Mode	
Fiber Connector		LC/PC*4	LC/PC*2
Power Supply		AC110~220V	AC110~220V
Power Consumption		≤ 85 W	≤ 100 W
Dimensions		416*268*101mm	400*595*200mm
Weight		≤ 15 kg	≤ 25 kg
IP Rating		IP65	IP65
Operating Temperature		-25~55 °C	
NMS	Local	Via RJ45	

Technical specifications are subject to change without prior notice.



	Remote	Via Cloud-based NMS (optional)
--	--------	--------------------------------



Shenzhen Prevail Technology Co., Ltd.

---

1107, Zhongfutai Building, Guangke Road #1, Pingshan District, Shenzhen 518122, China

Tel: +86-755-26466353

Email: [info@prevailtec.com](mailto:info@prevailtec.com)

[www.prevailtec.com](http://www.prevailtec.com)

